

Wolf Pack Welcome 2022

Wolf Pack Welcome (WPW) kicks off the Fall semester for the newest members of the Pack! There are a variety of programs to help you prepare for classes, meet other incoming students, participate in Loyola traditions, and more.

WPW is mandatory for all first-year students, both residential and commuter. The WPW schedule is mobile!

Download the Guidebook app and select the "Wolf Pack Welcome 2022" guide today!

Parent & Caregiver Schedule

We have included events for parents and caregivers to participate in. These events are denoted with an asterisk(*).

Meals in the Orleans Room or In the City

Dine in the Orleans Room or try a local restaurant! Incoming students should use their meal plan to access the Orleans Room. If you are a student facing food insecurity, please stop by Havoc's Helpdesk for assistance. Guest meal prices: \$10.08 for breakfast, and \$12.23 for brunch, lunch, and dinner.

Take your Family Photo!

Before your family leaves campus, we encourage you to take a family photo to celebrate this milestone. Share your photo memento with the whole Loyola family by posting it to social media using #LOYNO26. Locations: Your residence hall room, St. Ignatius of Loyola statue, LOYOLA sign on St. Charles Avenue, or the outdoor displays.

Get to NOLA

There are tons of places to explore in the Greater New Orleans area! Check the "Get to NOLA" section under the Resource & Documents tab in the Guidebook app to see offers that are available for you to explore the city of New Orleans.

Taking Care of Business

The bookstore and university offices are open M-F from 8:30AM-4:45PM. Feel free to use this time to explore campus.

Access and Affordability

Should you need any accommodations during Wolf Pack Welcome, please contact orientationcoordinator@loyno.edu.

Events that are mandatory for students are denoted with two asterisks (**).

THURSDAY, AUGUST 18 | Welcome & Academic Success

- 7:00-9:00AM*** **Breakfast in the Orleans Room or In the City**
- 9:00-10:15AM*** **Welcome to the Pack! | Roussel Auditorium****
The Department of Student Life and Ministry, New Student Programs staff, and university leaders will welcome you to Wolf Pack Welcome.
- 10:30-11:30AM*** **Coffee Chat with Parents & Caregivers | Danna Student Center Courtyard**
Grab your morning brew, and meet other parents and caregivers!
- 10:30-11:30AM** **Krewe Chat - Introduction to Campus | Various Locations****
At the first Krewe Leader (KL) meeting, KLs will lead small group sessions to discuss the Wolf Pack Welcome schedule and how they will serve as a campus resource. Check Guidebook for your meeting location.
- 11:30AM-1:45PM*** **Lunch in the Orleans Room or In the City**
- 11:30AM-1:45PM*** **Farmer's Market | Starbucks Lounge, Danna Student Center**
Stop by the Farmer's Market to pick up some fresh, local produce.
- 11:30AM-1:45PM*** **Student Success Center Open Houses | J. Edgar & Louise S. Monroe Library**
Located on the second floor of the J. Edgar & Louise S. Monroe Library, the Student Success Center will host an Open House for students to stop by and learn about resources that will ease the transition into college life.
- 11:30AM-1:45PM*** **Resource Central | St. Charles Room, Danna Student Center**
Multiple campus departments will have representatives present to share additional resources or answer any questions you may have. Meet staff from the Office of Equity and Inclusion, Center for International Education, the University Counseling Center, and many more.
- 11:30AM-1:45PM** **Orientation & Everfi Student Conduct Trainings Completion | Various Locations**
You will have the opportunity to access computer labs to complete your mandatory orientation modules. See the Guidebook app for room locations.
- 2:00-3:00PM** **On the Prowl for Academic Success | Roussel Auditorium****
Hear from key figures in Academic Affairs about adjusting to university-level instruction, various learning opportunities, and tips and tricks for setting a solid academic foundation in your first year.
- 2:00-3:00PM*** **Parenting the Pack | Audubon Room, Danna Student Center**
Meet our faculty and staff members who have experienced being a Loyola parent or caregiver. This is the perfect opportunity to gain insight on how to better support your student throughout their academic journey.

3:15-4:30PM*

Convocation & Class Picture | Holy Name of Jesus Church**

At this formal welcome to the Class of 2026, hear from university leadership, enjoy musical performances, and get your Loyola experience started off on the right note! After Convocation, you'll take your class photo.

4:45-5:30PM

Work-Study Presentation | Nunemaker Auditorium

The Career Development Center will share resources pertaining to work-study policy, eligibility, and opportunities. This presentation is highly recommended for students participating in the Work Study Fair. This presentation is ONLY for students who did not attend the virtual Work Study Training over the summer.

5:00-7:00PM

Dinner in the Orleans Room or In the City

7:15-8:15PM

Resident Floor Meeting | Various Locations**

Resident Assistants (RAs) will host meetings for their floors to review the ins and outs of living on campus. **This event is only mandatory for students living on campus.

7:15-8:15PM

Commuter Connect | Satchmo's Lounge, Danna Student Center

Stop by and hang out with a few Commuter Assistants and other commuter students.

8:30-10:00PM

Late Night Programming | Various Locations

Stop by as many events as you'd like! Check Guidebook for locations and event details.

FRIDAY, AUGUST 19 | Community Standards

7:00-8:30AM*

Breakfast in the Orleans Room or In the City

8:30-9:30AM

Krewe Chat - Health & Wellness | Krewe Leader Meeting Locations**

Learn more about health, wellness, COVID-19, and other resources that will assist you in caring for your whole self. Check Guidebook for your meeting location.

9:45-10:30AM

Conduct & Title IX Presentation | Roussel Auditorium**

Hear from our experts on our conduct and Title IX policies, as well as the different ways you can assist in keeping our campus safe.

10:45AM-1:15PM*

Brunch/Lunch in the Orleans Room or In the City

10:45AM-1:15PM

Work Study Fair | St. Charles Room, Danna Student Center

The Career Development Center will host a Work-Study Fair where students will speak with campus departments that are hiring work-study-eligible students.

10:45AM-1:15PM

Orientation & Everfi Student Conduct Trainings Completion | Various Locations

You will have the opportunity to access computer labs to complete your mandatory orientation modules. See the Guidebook app for room locations.

11:45AM-1:15PM

Commuter Lunch | Satchmo's Lounge, Danna Student Center**

Be formally welcomed to Loyola as a commuter student, meet upper-class commuter students, and learn about the different ways you can find community.

1:30-2:30PM

Bonny Shade's "Just Another Assault" | Roussel Auditorium**

Bonny Shade is a survivor of sexual assault. Students will explore their blind spots on the topic of sexual violence through national data and anecdotal information; understand consent; develop skills to respond to a survivor; understand the sexual violence spectrum and how they can take part in ending sexual violence through tangible intervention strategies.

2:30-4:30PM*

College Open Houses | Check Guidebook for Locations

Engage with faculty, staff, and upper-class students as they discuss the majors, minors, and academic and research pursuits available to you within each school. All open houses are a drop-in format; you are encouraged to explore all interests and attend as many as apply. College of Music & Media, College of Business, College of Arts & Sciences, and College of Nursing & Health are waiting to meet you!

4:30-6:30PM*

Dinner in the Orleans Room or In the City

6:30-8:30PM

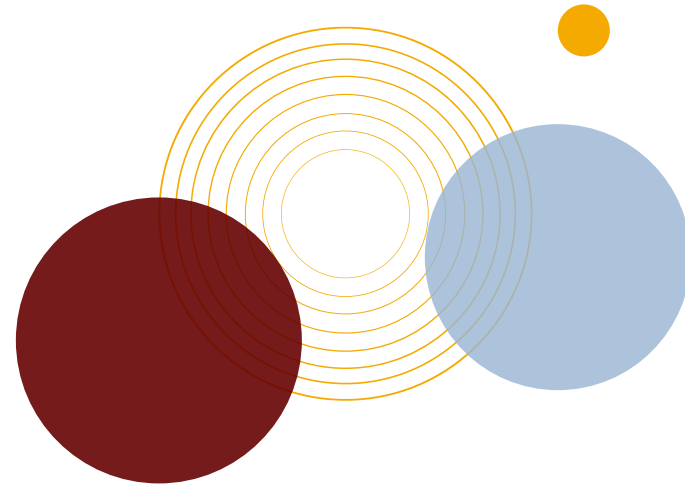
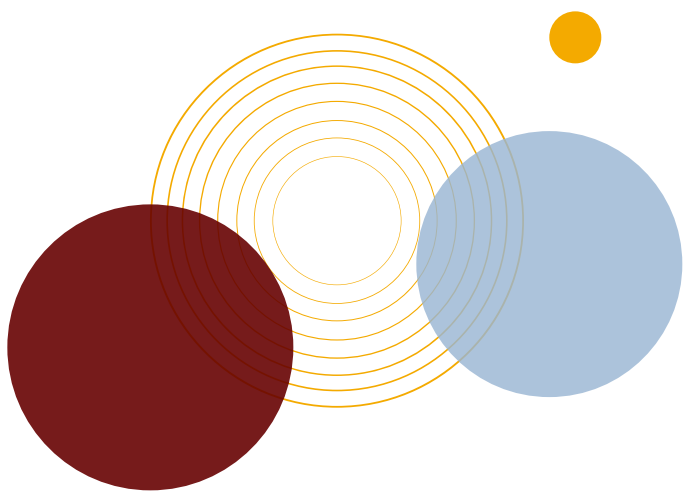
Get Involved Fair | Peace Quad

Speak with representatives from some of our Registered Student Organizations to find out how you can find your niche within the Pack.

9:00-11:00PM

Late Night Programming | Various Locations

Stop by as many events as you'd like! Check Guidebook for locations and event details.



SATURDAY, AUGUST 20 | Social Justice

- 7:00-9:00AM*** **Breakfast in the Orleans Room or In the City**
- 9:30-10:45AM** **Krewe Chat - Integration Into Campus Life | Krewe Leader Meeting Locations****
Join your Krewe as you will discuss the many ways in which you can become integrated into the Loyola community. You will also work with your Krewe members to discuss ways in which the incoming class can exhibit the Jesuit values.
- 11:00AM-noon** **Saul Flores' "The Walk of the Immigrants" | Rousset Auditorium****
Saul Flores is a philanthropist, photojournalist, and speaker who is nationally recognized for his social impact projects. Through his most recent project, Saul documents the amazing lives of thousands of Latin American immigrants to fundraise for an elementary school in his mother's hometown. Additionally, Saul has been featured as a keynote speaker for dozens of universities, inspiring audiences through his visual presentations, in which he helps people realize the capacity of their immense human potential given times of extreme adversity.
- 12:00-2:00PM*** **Lunch in the Orleans Room or In the City**
- 12:00-2:00PM** **Walk Your Schedule | St. Ignatius of Loyola Statue**
Go on a campus tour with some of the Krewe Leaders to find your fall classroom meeting locations. Don't forget your class schedule!
- 12:00-2:00PM** **TLC Meet 'n' Greet | Audubon Room, Danna Student Center**
Residential Life will be hosting a Meet 'n' Greet for students living in Themed Living Communities. Come out and meet your neighbors.
- 12:00-2:00PM** **Study Abroad Breakout Sessions | Nunemaker Auditorium**
The Center for International Education will host three breakout sessions to discuss international opportunities that will enhance your college experience.
- 12:00-2:00PM** **Pre-Health Advising | St. Charles Room, Danna Student Center**
Thinking about medical school, dental school, or other healthcare programs after graduation? Our pre-health advisors will share essential information about the majors, courses, and extracurricular activities required for a successful start on your pre-health path.
- 2:00-3:30PM** **PAWS & Reflect | Krewe Leader Meeting Locations****
PAWS (Promoting Awareness & Wolf Pack Solidarity) & Reflect is designed to reflect on the meaning of Loyola's mission to welcome students of diverse backgrounds, identities, and perspectives.
- 4:00 - 7:00 PM** **Wolf Pack Field Day | Residential Quad & St. Charles Room**
Join us for a Field Day in the Res Quad featuring water activities, food, games, good music, and a Faith Fair. Students will have the option to meet at 6 PM to walk to Hillel.
- 8:00-11:00PM** **Late Night Programming | Various Locations**
Stop by as many events as you'd like! Check Guidebook for locations and event details.

SUNDAY, AUGUST 21 | Faith & Exploration

- 7:00-9:00AM*** **Breakfast in the Orleans Room or In the City**
- 9:00AM-1:00PM** **Day of Service | Audubon Room**
Join the Loyola University Community Action Program and Immersion Programs for a day of service. Be sure to sign up! The link can be found in Guidebook.
- 10:00AM-5:00PM*** **Get to NOLA Programming | Around the City**
Your Krewe Leader will share with you the resources available for Loyola students to submerge themselves into the New Orleans culture and explore offerings in the city.
- 12:00-2:00PM*** **Lunch in the Orleans Room or In the City**
- 4:30-6:30PM*** **Dinner in the Orleans Room or In the City**
- 7:00-8:00PM*** **Christian Worship by Bethany Church | Satchmo's Lounge, Danna Student Center**
Join Bethany Church for a night of worship in Satchmo's Lounge.
- 8:00-9:00PM*** **Worship with Chi Alpha Christian Fellowship | Octavia Room, Danna Student Center**
Join Chi Alpha for Christian worship in the Octavia Room.
- 9:00-10:00PM*** **Welcome Mass | Ignatius Chapel**
All faiths, cultures, ethnicities, genders, and orientations are welcome and celebrated at our weekly Roman Catholic Mass!

Download the Digital Guide

<https://guidebook.com/g/wpw2022/>

Contact Us!

(504) 865-3622 or getinvolved@loyno.edu

Follow us on Social Media

  @loyno_slm

